

054300

RECEIVED  
LARAMIE COUNTY  
CHEYENNE, WY.

CERTIFIED LAND CORNER RECORDATION

DESCRIPTION OF CORNER EVIDENCE FOUND, AND ORIGINAL RECORD (if known)

89 FEB 17 AM 10 25

1/4 S.16  
S.21  
T.13N., R.70W.  
6th P.M.

Found 4"x8" granite stone projecting 8" above ground, 7/8" on North face  
1" Northeast of face intersection post.

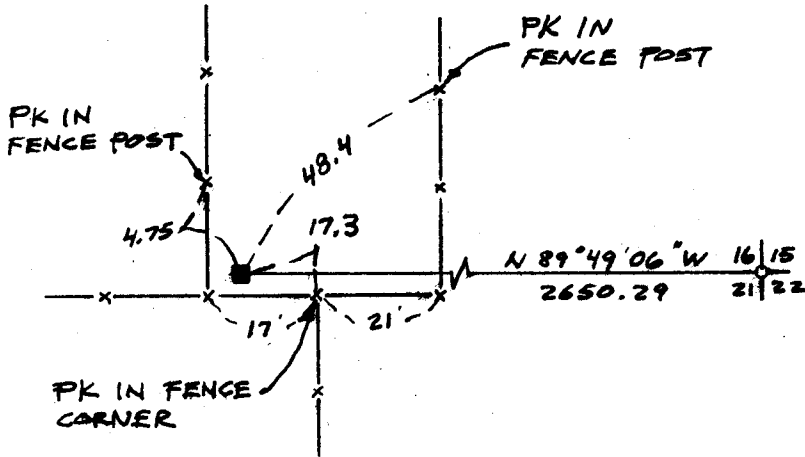
G.L.O. Record: 18"x10"x8" granite stone set by J. Wesley Hammond  
October 22, 1872.

DESCRIPTION OF MONUMENT AND ACCESSORIES ESTABLISHED  
TO PERPETUATE THE ORIGINAL LOCATION OF THIS CORNER:

At the corner: Not remonumented.

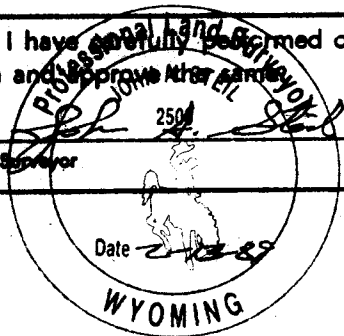
Accessories : See ties below.

SKETCH, WITH COURSE AND DISTANCE TO ADJACENT CORNER IF DETERMINED IN THIS SURVEY.  
(May Sketch or Paste Reproduction on Reverse Side.)



I, John A. Steil certify that I have personally examined or reviewed the work done on the diagrammed corner as reported on this recordation form and approve the same.

Signature of Supervisor \_\_\_\_\_ L.S. 2500  
Registration No.



STATE OF WYOMING,  
Office of Clerk and Recorder,  
County of \_\_\_\_\_

This "corner record" was filed for record on the \_\_\_\_\_ day of \_\_\_\_\_, 19\_\_\_\_, was noted on the cross-index plat and is assigned page No. \_\_\_\_\_, in book No. \_\_\_\_\_.

Janet C. Whitcomb  
County Official

Cross Index No.	N-11	T.	13N	R.	70W	Mer.	6th
						Mer.	
						Mer.	
						Mer.	
						Mer.	
						Mer.	
						Mer.	